

Phoenix Counter User Instructions



1 At the side of the case flip up the metal handle and twist to release the clips



2 Open case right out to form the shape of the counter



3 Open the counter top out and place onto the grooves on top of the counter.



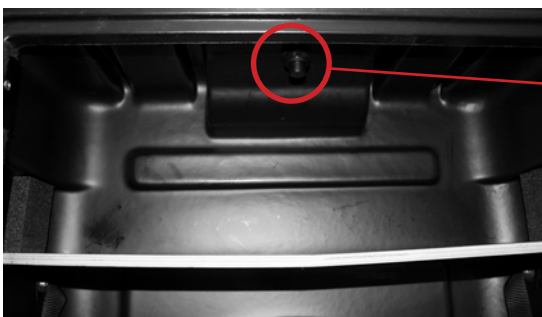
4 Adjust the counter top until it clicks into place.



5 Located at each end of the counter is a fabric strip. Attach the graphic panel to each end using the vlecro strip, ensuring its level on both sides.



6 Your Phoenix Counter is now assembled and ready to use.



Removing Counter Top

Located on the inside top of each side of the counter is a release button. Press in and lift top panel up and away from the counter. Repeat on the other side and remove the top panel

Phoenix Counter

User Instructions



1 At the side of the case flip up the metal handle and twist to release the clips



2 Open case right out to form the shape of the counter



3 Open the counter top out and place onto the grooves on top of the counter.



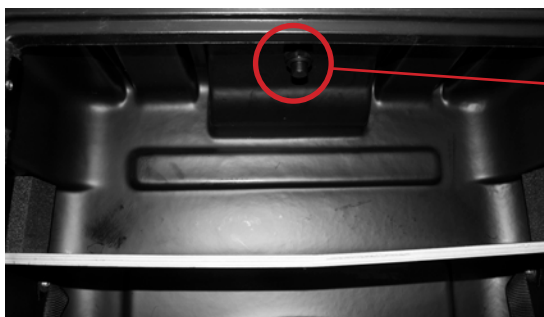
4 Adjust the counter top until it clicks into place.



5 Located at each end of the counter is a fabric strip. Attach the graphic panel to each end using the vlecro strip, ensuring its level on both sides.



6 Your Phoenix Counter is now assembled and ready to use.



Removing Counter Top

Located on the inside top of each side of the counter is a release button. Press in and lift top panel up and away from the counter. Repeat on the other side and remove the top panel