

# LuMax LED Light Box

## Assembling the Uprights

All frame sections will be numbered. The corresponding numbers should be connected. For example 8 should fit with 8 using the supplied attachments.

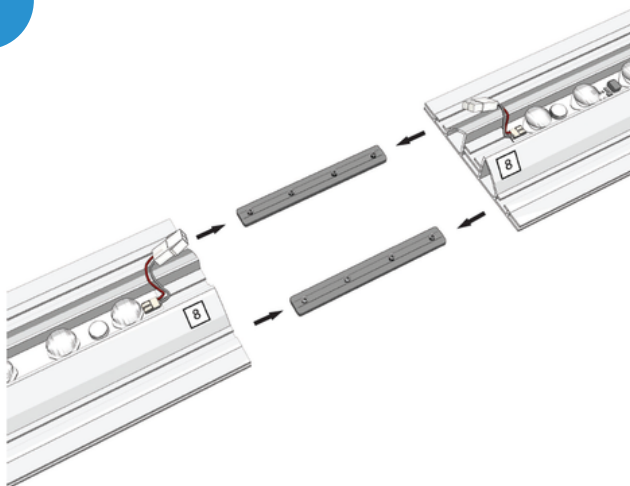
Use the Allen key to fix and then connect the LED lights together.



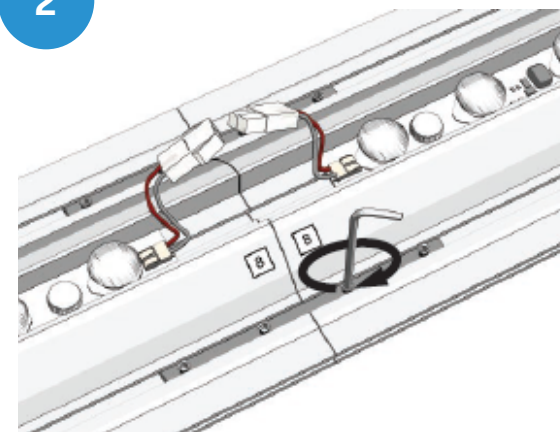
For smaller sizes, the upright profiles will be full size and not split. If they are full size, please skip to page 2.

Lay out all pieces, and make sure the 45 degree angles are facing outwards as these will create the corners.

1

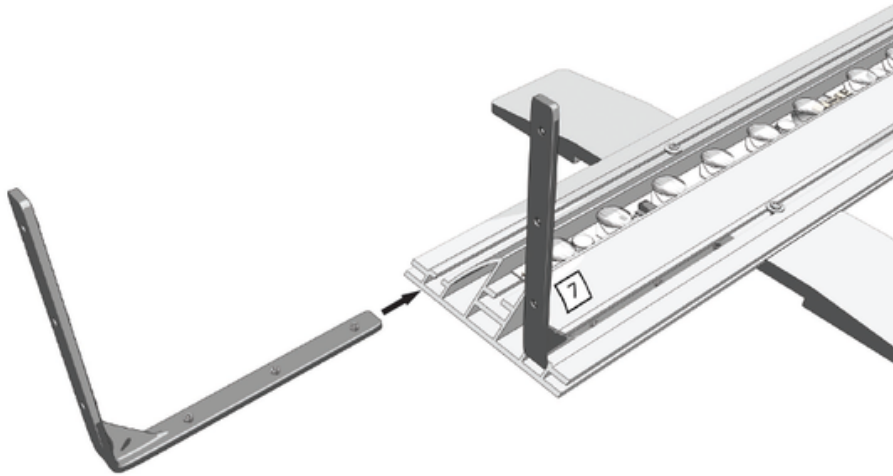


2

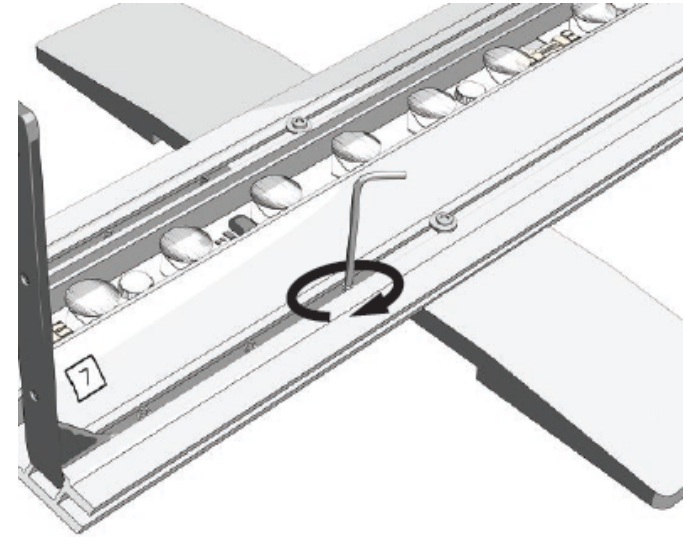


## Connecting the uprights to the base bar

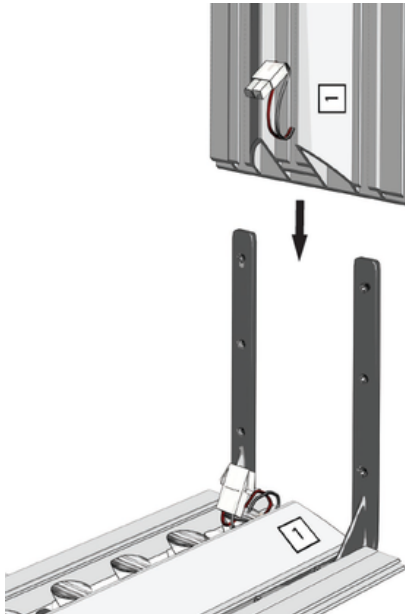
1



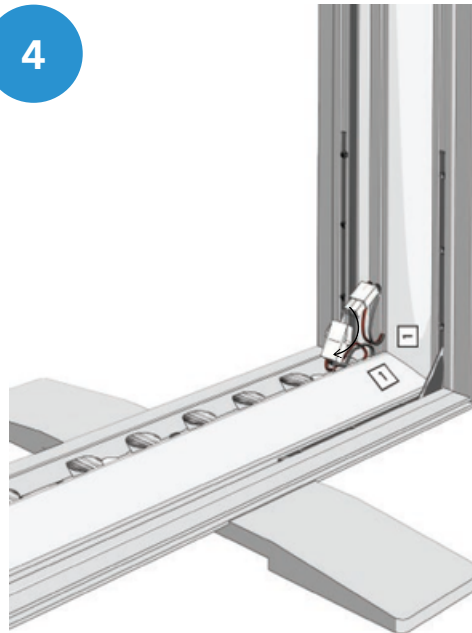
2



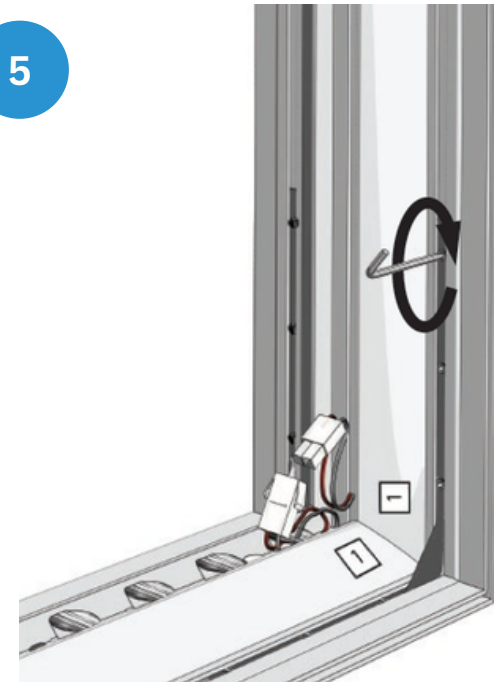
3



4



5

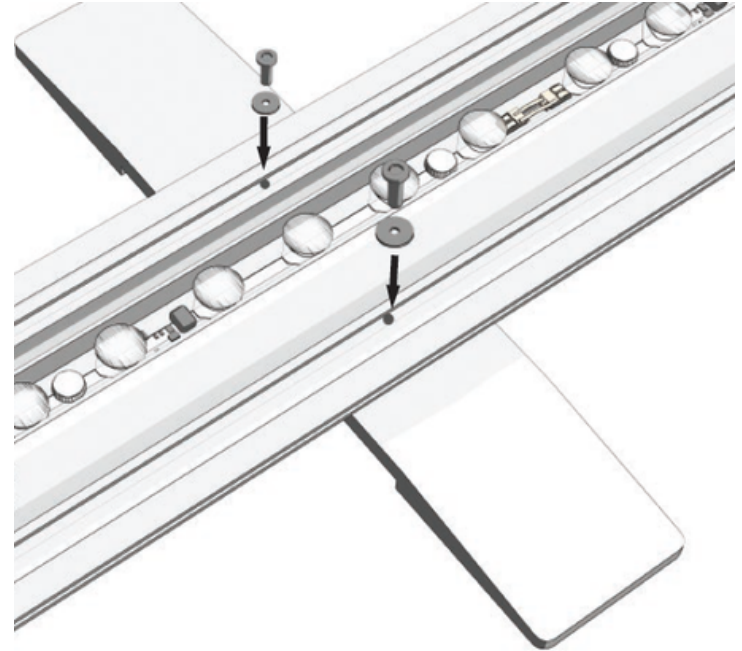


## Attaching the feet

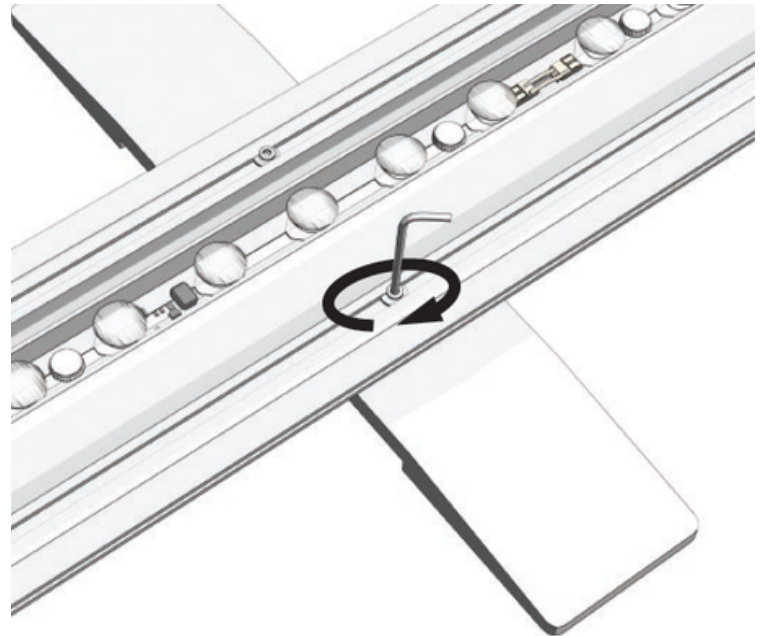
1



2

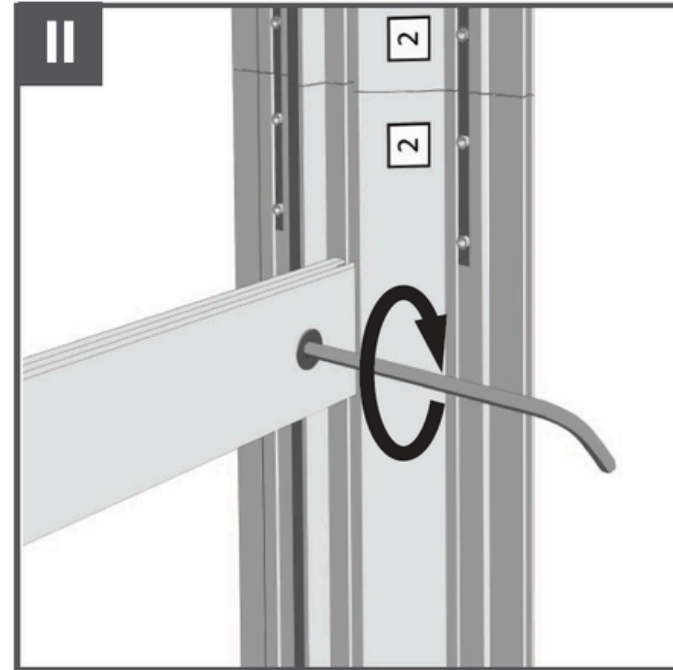


3



## Single Support

(Supports will change based on light box size)



## Cross Support

(Supports will change based on light box size)

