

## EVENT - 6 PANEL FOLDING DISPLAY BOARDS user instructions

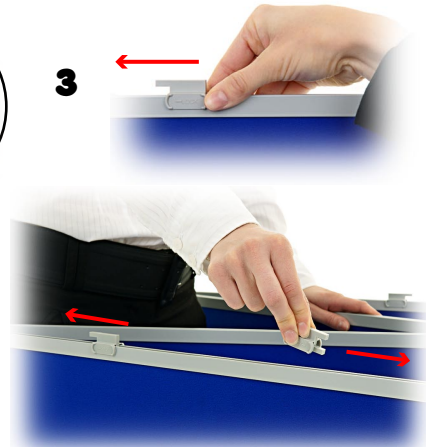
1



2



3



Event display board kit contains:  
Black carry bag  
Lightweight Aluminium display boards  
100 Velcro dots  
Locking clips kit

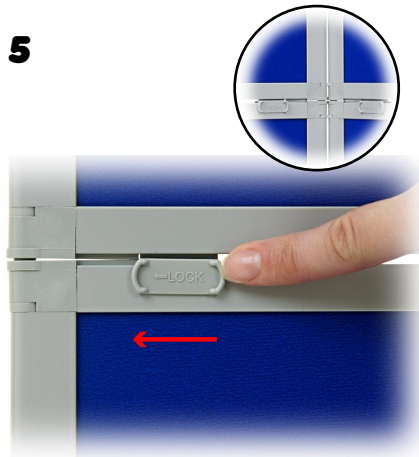
Remove all contents from the carry bag.  
Place one set of panels on the floor in an 'M' shape as shown. Ensure footpegs are on the floor.

Place the plastic locking clips on the top section of the display boards.

4



5



6



Take the second set of folding display boards and place over the first set with the locking clips on.

Push the locking retaining clips up to the frame edges to lock the display boards together.

If you have purchased the optional header board kit, attach the header as per step 3.

7



8



Your folding exhibition display boards are ready for use. You can add additional lights available from go-displays.co.uk.